



July 8, 2022

NOTICE OF COMMISSIONERS COURT MEETING

Notice is hereby given that the Erath County Commissioners Court will meet in Special Session on Monday, July 11, 2022 at 1:00 p.m. in the conference room of the 2nd Floor Courtroom at the Erath County Courthouse, Stephenville, Texas, to consider the following agenda items for discussion and possible action:

1. Open and Receive bids (item 27 approved on June 13, 2022 agenda) for a used motor grader with the option to trade in a JD 770 B Motor Grader. (K. McLearen/Pct. 2)
2. Discussion and action to approve bid for a used motor grader with the option to trade in a JD 770 B Motor Grader (Pct 2)
3. Discussion and action to approve to create a position for a Subdivision Coordinator (Keith Bailey)
4. Discussion and action to approve funding for a Subdivision Coordinator (Keith Bailey)
5. Discussion and action to approve rate of pay for a Subdivision Coordinator (Keith Bailey)
6. Closed Executive Session in Accordance with the Open Meeting Act, *Tex. Govt. Code 551.071 through 551.086*, to discuss:
 - a) Personnel
 - b) Legal Matter
 - c) Real Estate
 - d) Reconvene
7. Discuss any new business.
8. Adjourn.

Alfonso Campos
COUNTY JUDGE
ERATH COUNTY, TEXAS



POSTED
11:48 A.M. _____ P.M.

JUL 08 2022

GWINDA JONES, COUNTY CLERK
ERATH COUNTY, TEXAS
By _____ *CW* Deputy

Erath County Reserves the right to adjourn into Executive Session at any time during the course of this meeting to discuss any of the matters listed, as authorized by the Texas Government Code, §551.071 (Consultation with Attorney), subsection 551.071(2) (Consultation with Attorney on legal matters that are not related to litigation), §551.072 (Deliberations regarding Real Property), §551.073 (Deliberations about Gifts and Donations), §551.074 (Personnel Matters), §551.076 (Deliberations about Security Personnel or Devices), §551.087 (Economic Development), §551.088 (Deliberation regarding Test Item), and 551.089 (Deliberation regarding Security Devices or Security Audits).

STATE OF TEXAS

COUNTY OF ERATH

The above and foregoing is a true and complete copy of the minutes taken in my capacity as County Clerk of the Commissioners Court of Erath County, Texas, at the time and place heretofore set forth.

DATED at Stephenville, Texas, this 11th day of July, 2022.

ATTESTED BY:

GWINDA JONES, Erath County Clerk

A handwritten signature in cursive script, reading "Gwinda Jones", is written over a horizontal line. The signature is positioned below the typed name "GWINDA JONES, Erath County Clerk".

INVITATION TO BID LETTER

ERATH COUNTY
County Auditor
100 W Washington
Stephenville, Texas 76401

06/13/2022

Re: Bid Proposal for BID06132022(PII MotorGrader)

To Whom It May Concern:

ERATH COUNTY will be accepting bid proposals for the above referenced project. Bids must be received no later than 07/08/2022 at 9:00 AM. Bids received after this date and/or time will not be accepted and will be returned unopened to the sender.

The purpose of this project is to purchase a used motor grader. Key components of this purchase include:

- (1) Used Motor Grader
- 2014 or Newer
- 225 HP minimum
- 255 HP maximum
- 1,600 Hours maximum
- 75% Tires or better
- Lever Controls
- Rear View Camera
- 14 foot Moldboard
- Rear Ripper Assembly 3 Shank
- Air Conditioning/Heater
- Lights
- Radio
- Must be in good operating condition

This bid is to include seller incorporating the trade of Erath County's JD 770 B with 13,090 hours on the machine. Bidders need to schedule a time to appraise the value of the equipment to be traded and include it with their bid.

Contact Commissioner Albert Ray at 254-977-5731 with any questions you may have.

Bidding parties may visit the County Website or contact the County Auditor for detailed specifications for this bid:

Website
www.co.erath.tx.us

County Auditor
auditor@co.erath.tx.us
254-965-1425

All bids must be received in a sealed envelope clearly marked:

BID06132022 (PII Motor Grader) by the posted bid deadline.

If you are interested in submitting a bid, it should be delivered to the name and address listed below in a sealed envelope labeled as follows:

ERATH COUNTY
100 E Washington St
Stephenville, Texas 76401
Bid Submission Attn: County Auditor

You are reminded to bid only on those items designated on the bid invitation form. All additional items will be considered separately from the base bid and consideration of any changes will be negotiated with the owner after the bid opening.

ERATH COUNTY has the right to reject any and all bids at their sole discretion. Should you have any questions or concerns about any of the items on the bid invitation, please contact the County Auditor for clarification prior to bidding. You are reminded that your bid should be inclusive of all taxes, fees, permits, delivery charges and all other costs.

Upon selection of the winning contractor, ERATH COUNTY will send a bid award notice to the selected contractor.

Thank you for your consideration of this invitation to bid.

Sincerely,

Kent Reeves

Erath County Auditor



JOHN DEERE

Investment Proposal (Quote)

RDO Equipment Co.
5301 Mark IV Parkway
Fort Worth TX, 76131
Phone: (817) 232-8094 - Fax: (817) 847-0398

Proposal for:
ERATH COUNTY #2
OFFICE OF COUNTY AUD
100 W WASHINGTON ST
STEPHENVILLE, TX, 764014255
ERATH

Investment Proposal Date: 7/6/2022
Pricing Valid Until: 7/20/2022
Deal Number: 1570570
Customer Account#: 1484006
Sales Professional: Brent Ford
Phone: (817) 232-8094
Fax: (817) 847-0398
Email: BFord@rdoequipment.com

Comments

Price includes price increase from John Deere on July 1st. Trade figure can not be given at this time due to this being a factory order and current market conditions. Used equipment values are subject to change prior to new machine arriving. Current estimated delivery date of a factory ordered unit is late March - early April 2023.

Equipment Information

Quantity	Serial Number Stock Number	Hours (approx.)	Status / Year / Make / Model Additional Items	Cash Price
1	TBD TBD	0	New 2023 JOHN DEERE 670G	\$542,423.16
			Freight in factory freight	\$3,850.00
			Freight Out deliver	\$1,000.00
			Prep / Reconditioning PDI	\$2,225.00
			Customer Discount Sourcewell Contract #032119-JDC (44% off List)	(\$238,666.19)
			Warranty -John Deere Comprehensive-60 Months, 4000 Hours,Deductible: 0, Exp Date: 5/3/2027	\$6,235.29
Equipment Subtotal:				\$317,067.26

Purchase Order Totals

Balance:	\$317,067.26
Total Taxable Amount:	\$0.00
TX STATE TAX:	\$0.00
TX CITY TAX:	\$0.00
TX SPECIAL TAX:	\$0.00
Sales Tax Total:	\$0.00
Sub Total:	\$317,067.26
Cash with Order:	\$0.00
Balance Due:	\$317,067.26

Equipment Options

Qty	Serial Number	Year / Make / Model	Description
1	TBD	2023 JOHN DEERE 670G	8440T 670G MOTOR GRADER 1140 John Deere PowerTech PSS 9.0L meets EPA FT4 Emissions 1830 Engine Exhaust W/ Flat Black Stack (FT4 or Stage V only) 1420 Severe Duty Fuel & Water Filtration System 1310 Quick Service Group 9360 Engine Block Heater 9380 Heavy Duty Air Cleaner - 9.0L 14 in 9395 Adjusting Rotary Ejector Precleaner 1010 Standard Antler Rack Hydraulic Controls 5025 Low Cab w/ Fixed Lower Front and Side Opening Windows 8830 Rear Camera (R4) 8210 Exterior Mounted Rearview Mirrors 8410 AM/FM Radio with Aux and Weather Band (WB) 8310 Lower Front Intermittent Wiper & Washer 6010 Powered Cab Air Precleaner 6120 Standard Fabric Air Suspension Seat with Armrests and Headrest 8720 No Sound Absorption Package 6510 Base Hydraulics - 4 Function Controls 6620 Base Hydraulics w/ 1 Auxiliary Function Control 8510 Air Conditioner Refrigerant Charged 9210 Decelerator 2575 No Grade Control Base Kit Installed 2775 No Topcon 3D GPS Grade Control System installed 5815 Hydrau 1610 Hydraulic Pump Disconnect 170K JDLink™ 1910 Blade Impact Absorption System 2070 14 Ft. x 27 In. x 1 In. (4.27M x 686mm x 25mm) w/ 8 In. x 3/4 In. (203 x 19mm) Cutting Edge & 5/8 in. (16mm) Hardware 2850 Premium Circle 1235 130 amp Alternator 7110 Transporting Lights (6 Halogen Lights) 8110 24-to-12 Volt Converter (15 amps peak / 10 amps continuous) 9299 Beacon with Flip Down Cab Beacon Bracket (LH) 6710 Front Push Block 6810 Rear Mounted Ripper/Scarifier Combination with Rear Hitch and Pin 9430 (9) Extra Scarifier Shanks w/Teeth For Rear Ripper/Scarifier 9220 5.0 lbs. multi purpose (ABC) Dry Chemical Fire Extinguisher 9280 Slow Moving Vehicle (SMV) Sign 5510 Autoshift Transmission 5710 Transmission Solenoid Valve Guard 4923 No Brand Preference 7820 No Front Fenders 9723 17.5R25 L2 1 STAR NO BRAND PREFERRED WITH 1PC RIM 2605 English Manual W/ English Labels & Decals



7/7/2022

Quote #: jmcdonnell-1690

Albert Ray
ERATH COUNTY
100 West Washington
Stephenville, TX 76401

Dear Albert Ray:

We are pleased to quote the following for your consideration:

KOMATSU GD655-6 2019 model w/ 1555 hours, Unit # K19861, S/N 60478.

The following Factory and Dealer Options are included in the package:

- KOMATSU GD655-6 2019, RIPPER
- All Standard Factory Options
- MOLDBOARD 14' X 26" X 1
- PUSH PLATE
- REAR-MOUNTED RIPPER/SCARIFIER ASSEMBLY
- T&R 17.5 X 25 XTLA RADIAL - FRONT
- T&R 17.5 X 25 XTLA RADIAL - REAR

~~5 Premier Warranty until 8/9/2022 (can be extended)~~

Sales Price Complete:	\$215,855.00
Less Trade:	\$22,355.00

Total Price: \$193,500.00

Trade-in Description:

Manufacturer	Model	Serial #
John Deere	770BH	Serial # DW770BH543134

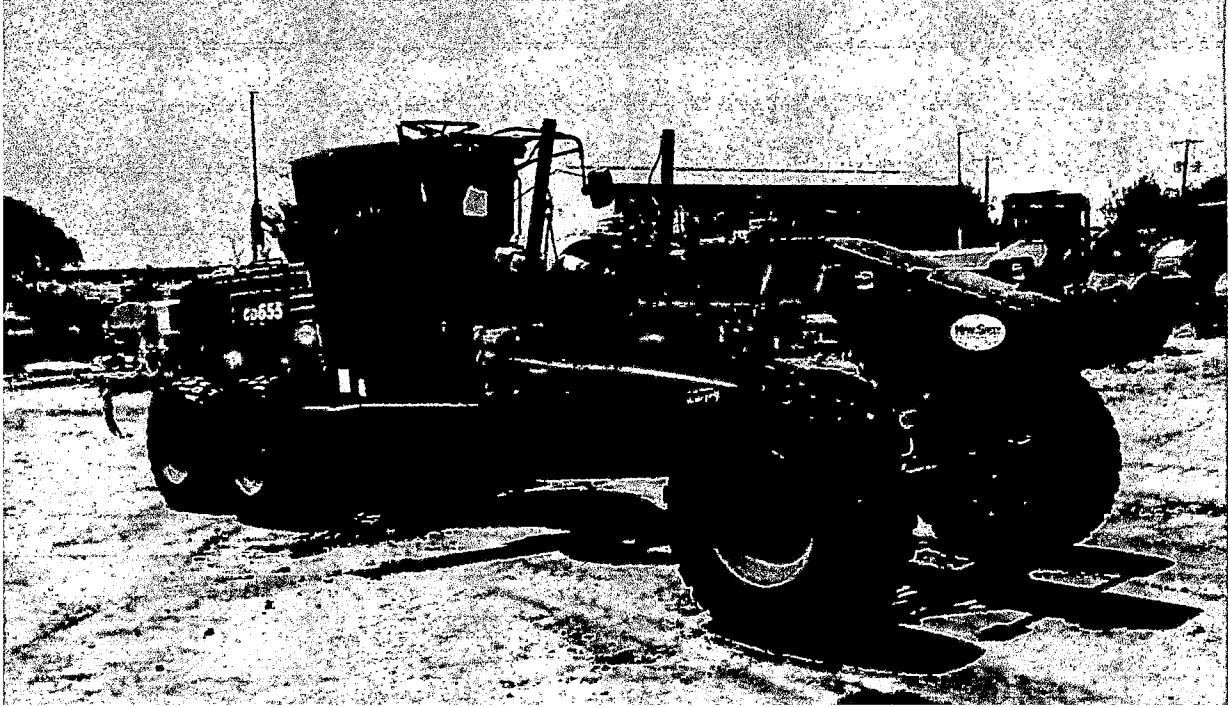
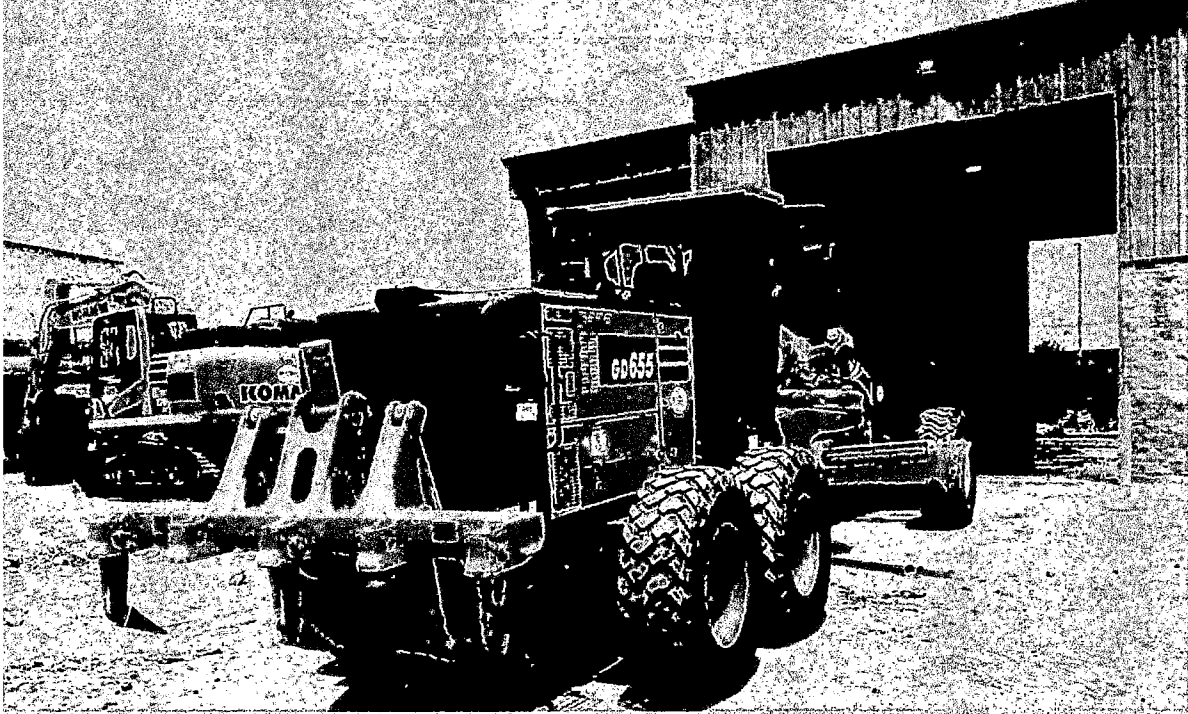
We believe the equipment as quoted will exceed your expectations. On behalf of Kirby-Smith Machinery, Inc., thank you for the opportunity to quote you this package.

Sincerely,

JAMES MCDONNELL
Governmental Sales Rep
Kirby-Smith Machinery, Inc.
Cell: 214-986-5857
Email: jmcdonnell@kirby-smith.com

www.kirby-smith.com | 888-861-0219

Oklahoma City * Tulsa * McAlester * Dallas * Fort Worth * Abilene * Amarillo * Lubbock
Waco * Odessa * St. Louis * Kansas City



LSR Enterprise, LLC.

100 Ridgmar Dr, Weatherford, TX, 76088
 PO Box 2361, Weatherford, TX, 76086

06/30/2022

Bill To: Erath County
 100 E Washington St
 Stephenville, TX, 76401

Delivery: CPU

Year	Make	Model	Serial Number	SUSD
2015	John Deere	670G	F666775	\$175,000.00
Trade In:				
1990	John Deere	770B	X539804	(\$30,000.00)

Notes: These machines are pending payment and will be cleared for delivery once payment has been received in full. **Machine(s) and or Attachment(s) are being sold "As Is" and "Where Is" with no Expressed or Implied Warranties pertaining to this Sale, including but not limited to, The Warranty of Merchantability and The Warranty of Fitness for a Particular Purpose.**

Wiring Instructions:

Acct. Info: LSR Equipment Enterprise, LLC.
 100 Ridgmar Dr
 Weatherford, TX, 76088

Bank Info: Southside Bank
 2311 West Eules Blvd.
 Eules, TX 76040
 Julie H: (817) 367-4967

Acct. # 2003013113
Rt. # 111923607

SWIFT SOBBUS41

Subtotal: \$145,000.00
Sales Tax (6.75%): N/A
TERP Tax (1.50%): N/A
Delivery: CPU
<u>Total: \$145,000.00 USD</u>

We appreciate your business!!!

Erath County
Attn: Kent Reeves
Bid 06132002 (P II motor-grader)

RECEIVED
JUL 07 2022

Kirby-Smith Machinery

Attn: Kent Reeves

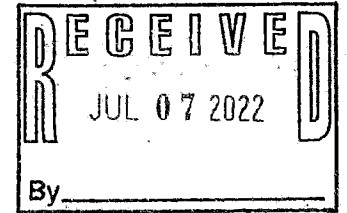
BID06132022 (PII MOTOR GRADER)

RECEIVED
JUL 08 2022

L SR Equipment Enterprises

P.O. Box 2361

Weatherford, TX
76086



Erath County
100 E. Washington St.
Stephenville, TX
76401

Attn: County Auditor
Bid Submission